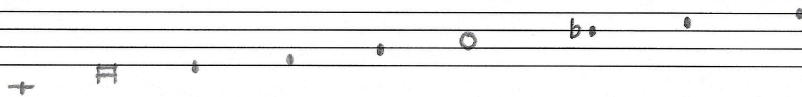


medieval church modes

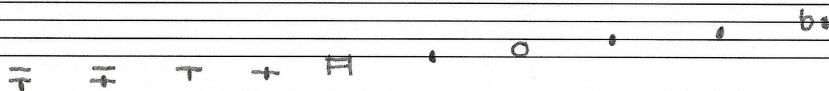
Protus Authentic      H-final      O-reciting tone

1- Dorian mode



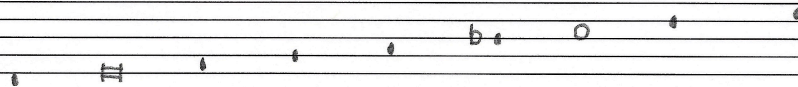
Protus Plagal

2- hypodorian mode



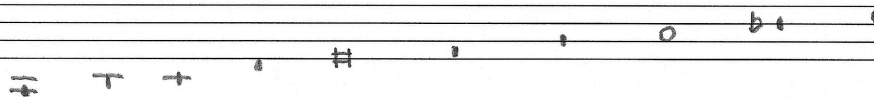
Deuterus Authentic

3- phrygian mode



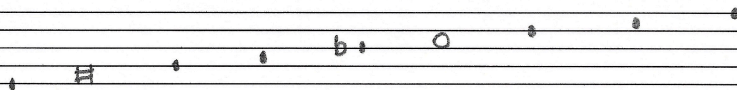
Deuterus Plagal

4- hypophrygian mode



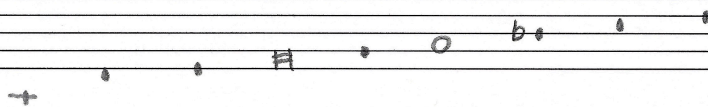
Tritus Authentic

5- Lydian mode



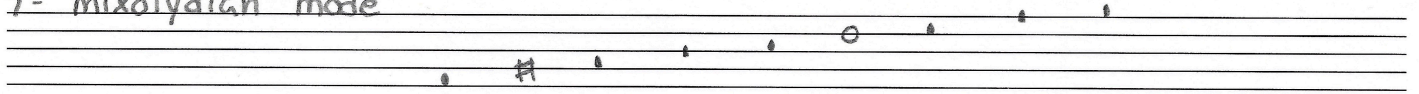
Tritus Plagal

6- hypolydian mode



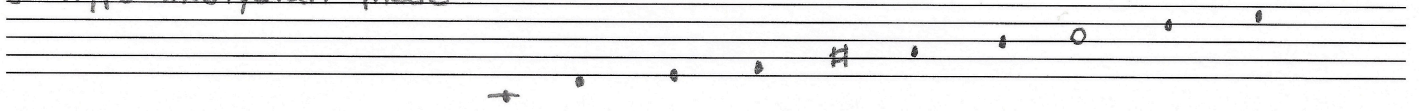
Tetrardus authentic

7- mixolydian mode



Tetrardus plagal

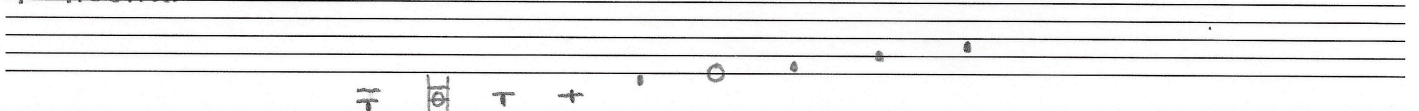
8- hypomixolydian mode



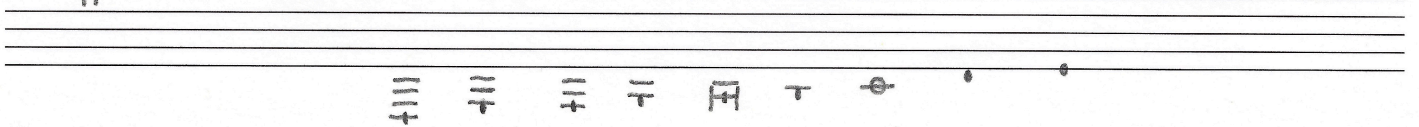
Henricus Glareanus Dodecachordon 1547

Renaissance modes

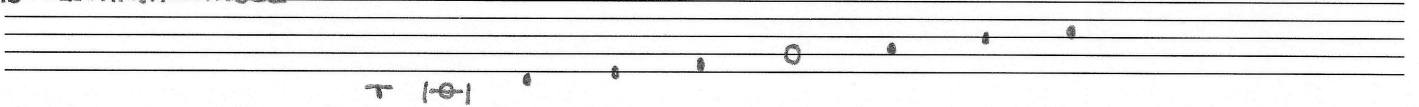
9- Aeolian mode



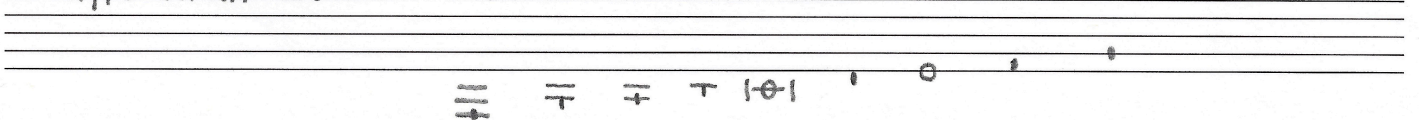
10- hypoaolian mode



13- Ionian mode



14- hypoionian mode



Theoretical modes

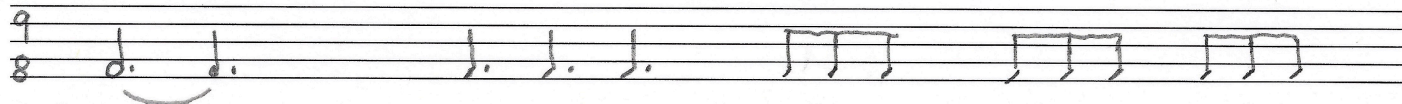
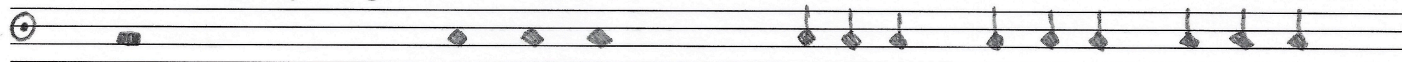
11- Locrian mode

12- hypolocrian mode

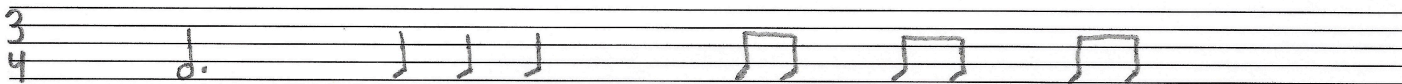
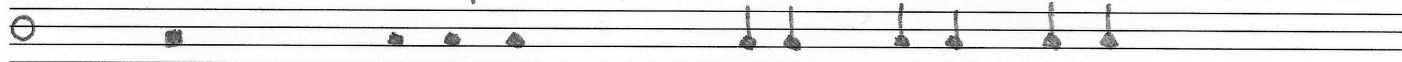
Elvis Jerome January 2, 2026

mensuration signs ancestors of modern time signatures

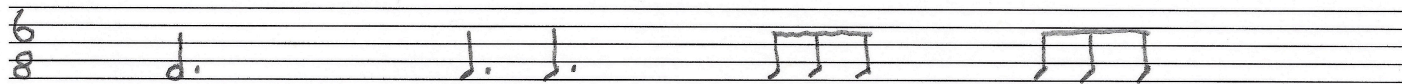
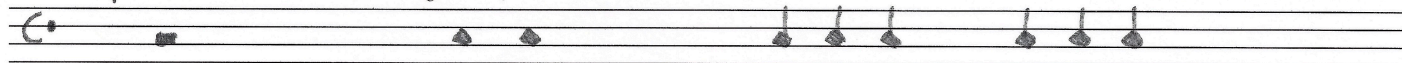
1- perfect time, major prolation



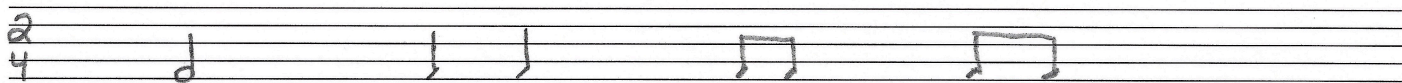
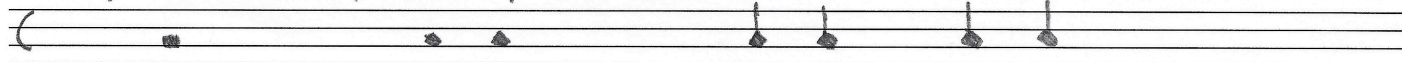
2- perfect time, minor prolation



3- Imperfect time, major prolation



4- imperfect time, minor prolation

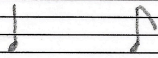


rhythmic modes

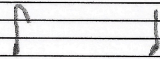
longs - long notes

Breves - short notes

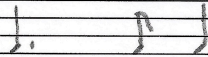
1. LB



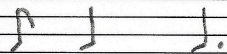
2. BL



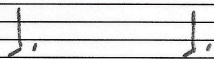
3. LBB



4. BBL



5. LL



6. BBB

